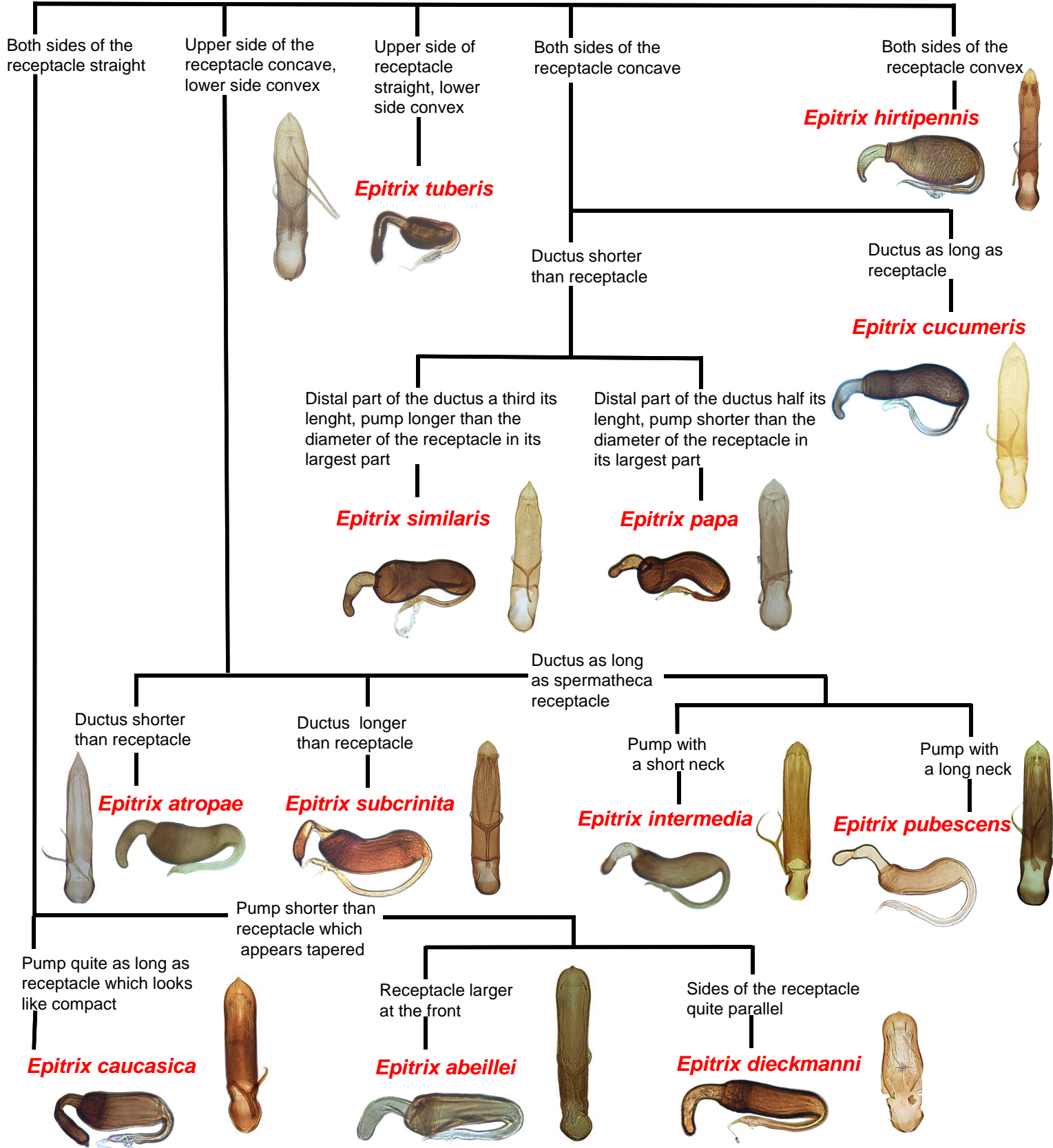


Pictorial key for diagnostic of main *Epitrix* potato pests and European species based on Spermatheca

Germain Jean-François / Mouttet Raphaëlle
 Laboratoire de la santé des végétaux
 Unité entomologie et plantes invasives



A reliable diagnostic needs the observation of the female spermatheca associated with the male aedeagus as shown in this key