

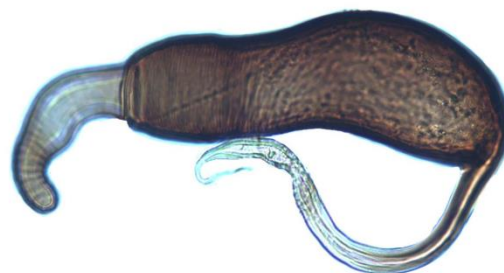
Pictorial key for diagnostic of main *Epitrix* potato pests and European species Montferrier-sur-Lez, November 5, 2015

Germain Jean-François
Laboratoire de la santé des végétaux
Unité entomologie et plantes invasives



1.7-2.0mm

50µm



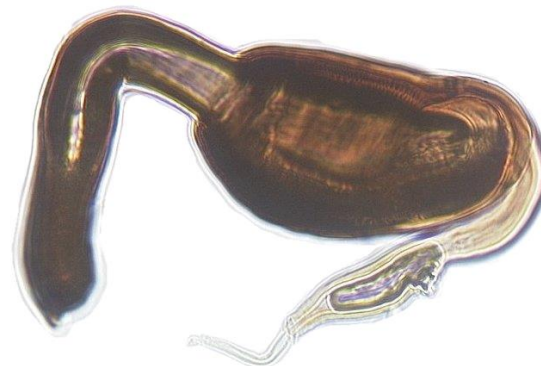
200µm



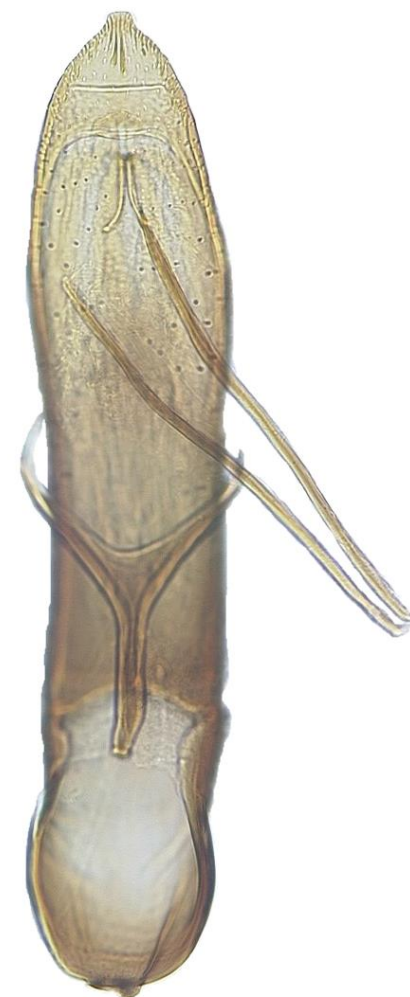
***Epitrix cucumeris* (Harris)**



1.8-1.9mm



100µm



Epitrix tuberosis Gentner



1.-2.3mm



Epitrix subcrinita (LeConte)



1.8-2.2mm

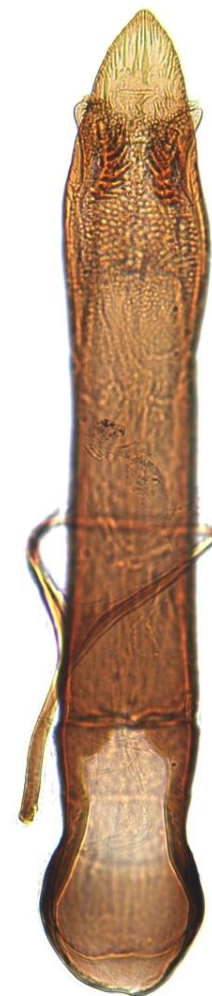
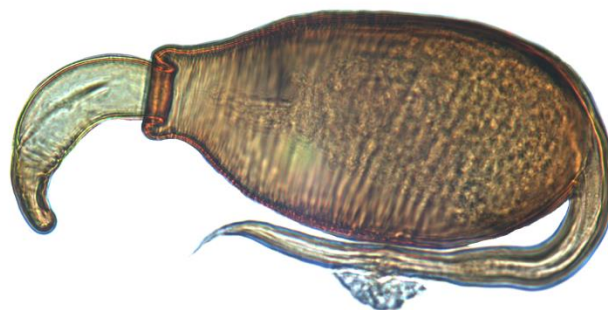
Epitrix papa Orlova-Bienkowskaja





1.6-2.1mm

***Epitrix hirtipennis* (Melsheimer)**





1.7-1.8mm

***Epitrix similaris* Gentner**





1.2-2.0mm



Epitrix atropae Foudras



1.7-2.1mm



Epitrix intermedia Foudras



1.5-2.0mm

***Epitrix pubescens* (Koch)**





1.3-1.6mm

***Epitrix caucasica* (Heikertinger)**





1.6-2.0mm

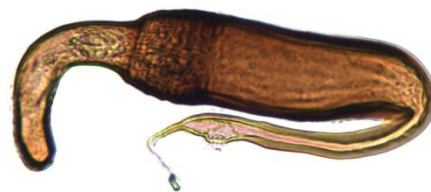


***Epitrix abeillei* (Bauduer)**

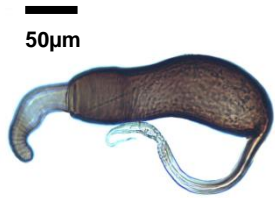
(Israel and Jordan)



1.4-1.7mm



***Epitrix dieckmanni* (Mohr)** (Turkey, Israel and Jordan)



E. cucumeris



E. tuberosa



E. subcrinita



E. hirtipennis



E. similaris



E. papa



E. atropae



E. intermedia



E. pubescens



E. caucasica



E. abeillei



E. dieckmanni

