



Animal Health Law:

disease prevention and control rules
applying to listed diseases of equine animals,
in particular to dourine and surra

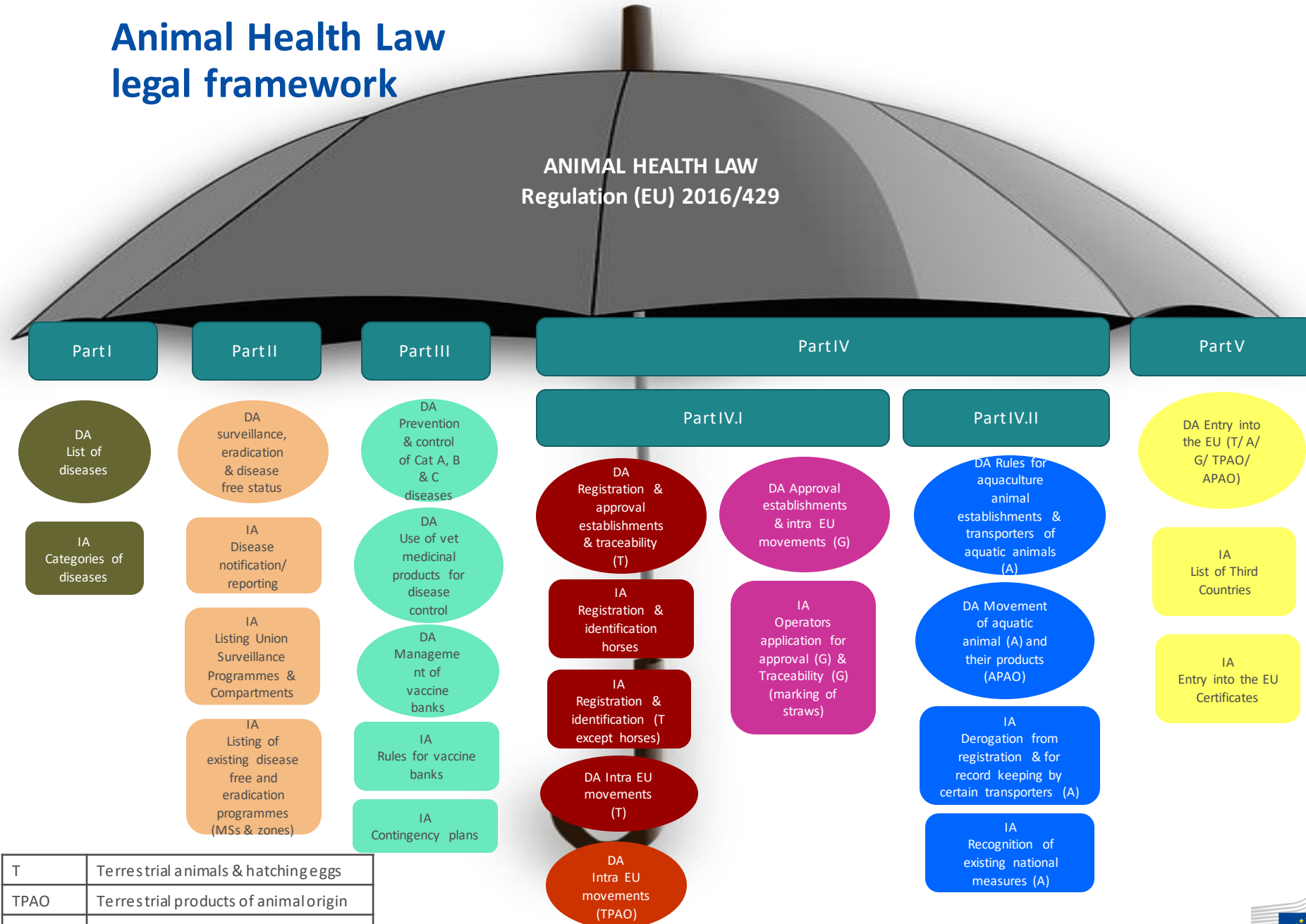
EURL for equine diseases

10 November 2022

Outline of the presentation

- 1. List of diseases of equine animals** in Animal Health Law and their categorisation (Part I of AHL)
- 2. Disease notification and reporting, surveillance, eradication** programmes, disease-free status (Part II of AHL)
- 3. Disease awareness, preparedness and control** (Part III of AHL)
- 4. Rules for movement between Member States** of equine animals (Part IV of AHL)
- 5. Rules for entry into the Union** of equine animals (Part V of AHL)

Animal Health Law legal framework



T	Terrestrial animals & hatching eggs		
TPAO	Terrestrial products of animal origin		
A	Aquatic animals		
APAO	Aquatic products of animal origin	○	Delegated Act (DA)
G	Germinal products	□	Implementing Act (IA)

IA intra EU animal health Certificates (T/ A/ G/ TPAO/ APAO)

1. Animal diseases under the AHL

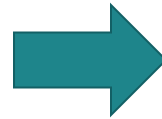
- ✓ EU limits its intervention with regard to certain measures to certain “listed” diseases
 - ✓ List of diseases for the EU intervention 
 - ✓ Categorise diseases by assigning measures to them for 
 - ✓ disease preparedness, awareness and disease control measures
 - ✓ disease eradication and disease freedom
 - ✓ animal health requirements for movements and trade
 - ✓ disease notification and reporting, surveillance
 - ✓ Lists animal species and assigns them to listed diseases 
- ✓ EU intervention possible for emerging diseases 
 - ✓ Defines what is considered as emerging disease
 - ✓ Sets the EU reaction on them

1. EU intervention: Animal diseases

- ✓ EU intervention limited to listed and emerging diseases

List of diseases – 63 diseases

- Article 5(1) (most important diseases) – **FMD, CSF, ASF, HPAI, AHS**
- Article 5(2) – Annex II (amended by Regulation (EU) 2018/1629)



- ✓ Listed diseases prioritised and categorised:

Category A: immediate eradication (normally not present in the EU)

Category B: compulsory eradication throughout the Union

Category C: optional eradication in Member States

Category D: measures to prevent from spreading through movements between Member States or entry into the Union

Category E: notification and surveillance within the Union

1. List of diseases of equine animals in Animal Health Law and their categorisation

- COMMISSION DELEGATED REGULATION (EU) 2018/1629 amending the list of diseases set out in Annex II to Regulation (EU) 2016/429
 - AHS (Article 5(1)), glanders, rabies, EIA, dourine, surra, VEE, anthrax, EVA, CEM, JE, WNF, EE (Western and Eastern)

- COMMISSION IMPLEMENTING REGULATION (EU) 2018/1882

- A diseases: AHS, Glanders

- B diseases: Rabies

Name of listed disease	Category of listed disease	Listed species	
		Species and group of species	Vector species
Dourine	D+E	Equidae	
Surra (<i>Trypanosoma evansi</i>)	D+E	Equidae, Artiodactyla	Tabanidae

- D diseases: EIA, Dourine, Surra, VEE, Anthrax

EVA, CEM (only germinal products)

NOTE:

For A and B diseases also rules for movements between MS and entry into the Union apply (as for D diseases)

- ⁶ E diseases: JE, WNF, EE (Western and Eastern)

For A, B and D diseases also rules for notification and surveillance apply (as for E diseases)



2. Disease notification and reporting, surveillance, eradication programmes, disease-free status

✓ Regulation (EU) **2016/429** (Articles 18-42) and Commission Delegated Regulation (EU) **2020/689**

1. Disease notification and reporting

2. Surveillance

- **Operator's obligations**
 - observe health, changes in the production parameters, abnormal mortalities
 - animal health visits by a veterinarian for the purpose of prevention
- **CA's obligation**
 - to detect presence of listed and emerging diseases

3. Eradication programmes

4. Disease free status

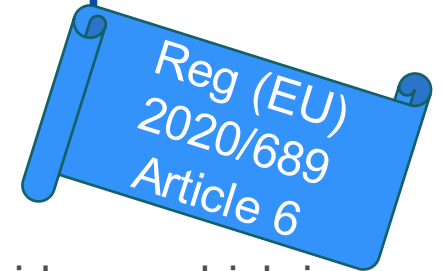
2. Disease notification and reporting, surveillance, eradication programmes, disease-free status

✓ Complementing legislation

Commission Implementing Regulation (EU) 2020/2002 on reporting and notification

- **Disease notification and reporting: diseases, deadlines, notification regions**
- Submission and reporting of eradication programmes, Union surveillance programmes
- Applications for disease freedom
- The computerised information system for Union notification and Union reporting of diseases - **Animal Disease Information System (ADIS)**

2. Collection of samples, the techniques, validation and interpretation of the diagnostic methods for the purposes of surveillance



From a prescriptive approach to a more flexible approach – a cascade:

1. Specific legislation adopted in accordance with Regulation (EU) 2016/429 and guidance which is made available in the websites of the EURL and COM
2. the Manual of Diagnostic Tests and Vaccines for Terrestrial Animals of the OIE
3. methods laid down in point (b) of Article 34(2) and Article 34(3) of Regulation (EU) 2017/625 (OCR):
 - national rules; in absence of national rules, relevant methods recommended by NRL validated in accordance with international standards or
 - relevant methods validated with inter or intra-laboratory methods validation studies
4. in case of urgency, NRL (in absence, other designated lab) may use methods which have not been validated



3. Disease awareness, preparedness and control

- ✓ Regulation (EU) **2016/429**, **Part III**,
 - ✓ Title I: * contingency plans and simulation exercises; * use of veterinary medicinal products for disease prevention and control; * antigen, vaccine and diagnostic reagent banks
 - ✓ Title II: disease control measures
- ✓ Commission Delegated Regulation (EU) **2020/687** - rules for the prevention and control of certain listed diseases (supplementing Articles 53 to 69 of the AHL)
 - ✓ immediate eradication measures as soon as **African horse sickness** and infection with ***Burkholderia mallei*** (**glanders**) is detected

4. Rules for movement between MSs of equine animals

- ✓ **Articles 84 to 120 and 124 to 156 of Regulation (EU) 2016/429**
 - ✓ **Commission Delegated Regulation (EU) 2020/688** - animal health requirements for movements within the Union of terrestrial animals and hatching eggs, in particular **Articles 22, 69, 76, 91, 92**
 - ✓ **Commission Delegated Regulation (EU) 2019/2035** - rules for establishments keeping terrestrial animals and the traceability of certain kept terrestrial animals, in particular **Articles 18, 24, 58 - 69**
 - ✓ **Commission Implementing Regulation (EU) 2021/963** - identification and registration of equine animals and establishing model identification documents for those animals

4. Rules for movement between MSs of equine animals

- ✓ animal does not come from an establishment subject to movement restrictions or situated in a restricted zone established for reasons of diseases listed for equine animals, including **African horse sickness** and infection with *Burkholderia mallei* (**glanders**);

in the establishment prior to departure

- ✓ **surra** not reported during 30 days, but if surra reported in the establishment in the last 2 years -> additional conditions (i.e. test: ELISA or CATT at a serum dilution of 1:4);
- ✓ **dourine** not reported during 6 months, but if dourine reported in the establishment in the last 2 years -> additional conditions (i.e. test: CFT at a serum dilution of 1:5);
- ✓ **equine infectious anaemia** not reported during 90 days, but if EIA reported in the establishment in the last 12 months -> additional conditions (i.e. test: AGID or ELISA);
- ✓ **Venezuelan equine encephalomyelitis** not reported during 6 months, but if VEE reported in the establishment in the last 2 years -> additional conditions (i.e. test: virus isolation, haemagglutination inhibition test or RT-PCR);
- ✓ **rabies** not reported during during 30 days and **anthrax** during 15 days

4. Rules for movement between MSs of equine animals

- Consignments accompanied by a certificate – models laid down in **Commission Implementing Regulation (EU) 2021/403** of 24 March 2021 (OJ L 113, 31.3.2021, p. 1)

ANNEX I

Annex I contains the following model animal health certificates and animal health/official certificates for the movement between Member States

EQUI-INTRA-IND	Chapter 7: Model animal health certificate for the movement between Member States of an individual equine animal not intended for slaughter
EQUI-INTRA-CON	Chapter 8: Model animal health certificate for the movement between Member States of a consignment of equine animals

MODEL 'EQUI-INTRA-IND'

MODEL 'EQUI-INTRA-CON'

- II.2.2. The animal comes from an establishment in which surra (*Trypanosoma evansi*) has not been reported during the 30 day period prior to its departure, and
- ⁽¹⁾either [surra has not been reported in the establishment during the 2 year period prior to departure.]
- ⁽¹⁾or [surra has been reported in the establishment during the 2 year period prior to its departure and following the last outbreak the establishment has remained under movement restrictions
- ⁽¹⁾either [until the remaining animals in the establishment have been subjected to a test for surra with one of the diagnostic methods provided for in Part 3 of Annex I to Commission Delegated Regulation (EU) 2020/688, carried out, with negative results, on samples taken at least 6 months after the last infected animal has been removed from the establishment.]]
- ⁽¹⁾or [for at least 30 days from the date of cleaning and disinfection of the establishment, after the last animal of listed species on the establishment was either killed and destroyed or slaughtered.]]

- II.2.3. The animal comes from an establishment in which dourine has not been reported during the last 6 months prior to its departure, and
- ⁽¹⁾either [dourine has not been reported in the establishment during the 2 year period prior to its departure.]
- ⁽¹⁾or [dourine has been reported in the establishment during the 2 year period prior to its departure and following the last outbreak, the establishment has remained under movement restrictions
- ⁽¹⁾either [until the remaining equine animals in the establishment, except castrated male equine animals, have been subjected to a test for dourine with the diagnostic method provided for in Part 8 of Annex I to Delegated Regulation (EU) 2020/688, carried out, with negative results, on samples taken at least 6 months after the infected animals have been killed and destroyed or slaughtered, or the infected entire male equine animals have been castrated.]]
- ⁽¹⁾or [for at least 30 days from the date of cleaning and disinfection after the last equine animal on the establishment was either killed and destroyed or slaughtered.]]

Part 3

Surra (*Trypanosoma evansi*)

Serological tests:

- (a) enzyme-linked immunosorbent assay (ELISA) for trypanosomiasis;
- (b) card agglutination test for trypanosomiasis (CATT) at a serum dilution of 1:4.

Part 8

Dourine

Complement fixation test for dourine, at a serum dilution of 1:5.

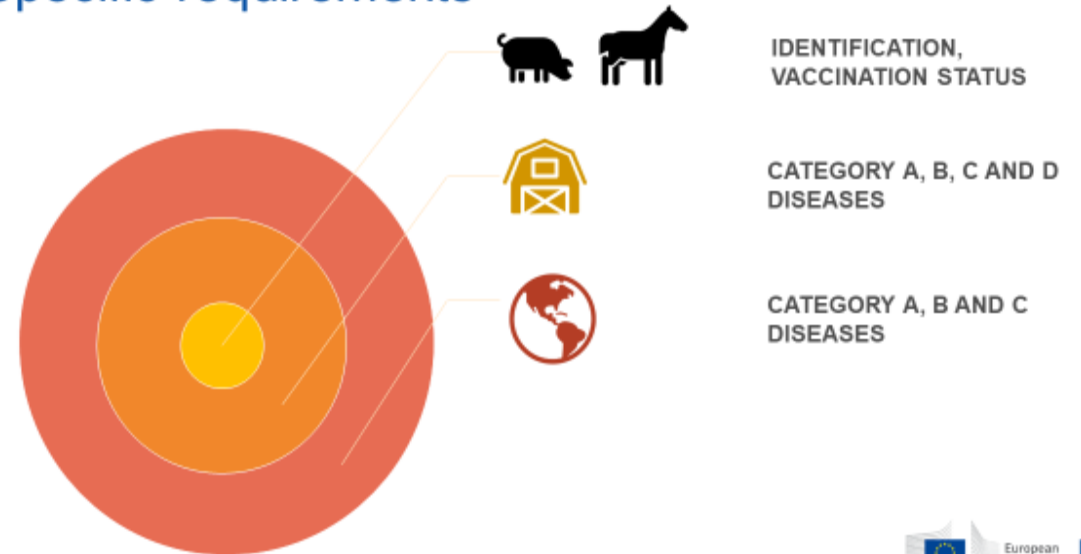
5. Rules for entry into the Union of equine animals

- ✓ Articles 229 to 239 of Regulation (EU) 2016/429
 - ✓ **Listing** of TCs - criteria
 - ✓ Compliance with **animal health requirements** – at least as stringent as the requirements applied in the EU
 - ✓ Consignments accompanied by a **certificate**, or declaration where relevant

5. Animal health requirements for entry into the Union of equine animals

- **Commission Delegated Regulation (EU) 2020/692** as regards entry into the Union, and the movement and handling after the entry of animals, germinal products and products of animal origin
- **Articles 11-19** – general requirements for kept terrestrial animals (residency periods, inspection prior to dispatch, rules for dispatch, transport, movement and handling after the entry)
- **Articles 20 - 35** – requirements for ungulates

Specific requirements



5. Sanitary groups and specific requirements – DR 2020/692

2. SPECIFIC REQUIREMENTS

2.4. Specific requirements for dourine

Equine animals must have undergone a complement fixation test for dourine, as described in point 3.1 of Chapter 2.5.3 of the OIE Terrestrial Manual (Version adopted 2013). The test must have been carried out, with negative results, at a serum dilution of 1 in 5 on a blood sample taken within a period of 30 days prior to the date of dispatch to the Union. In addition, the tested animals must not have been used for breeding during the period of at least 30 days prior to and after the date the sample was taken.

2.5. Specific conditions for surra (*Trypanosoma evansi*)

Equine animals must have undergone a card agglutination test for trypanosomiasis (CATT), as described in point 2.3 of Chapter 2.1.21 of the OIE Terrestrial Manual (Version adopted 2012). The test must have been carried out, with negative results, at a serum dilution of 1 in 4 on a blood sample taken within a period of 30 days prior to the date of dispatch to the Union.

1. SANITARY GROUPS TO WHICH THIRD COUNTRIES, TERRITORIES OR ZONES THEREOF ARE ASSIGNED

Sanitary group	Diseases for which specific requirements are required
A	equine infectious anaemia
B	equine infectious anaemia, glanders, dourine
C	equine infectious anaemia, Venezuelan equine encephalomyelitis
D	equine infectious anaemia, glanders, dourine, Venezuelan equine encephalomyelitis, surra
E	equine infectious anaemia, glanders, dourine, African horse sickness, surra
F	equine infectious anaemia, dourine, African horse sickness
G	equine infectious anaemia, glanders, dourine, surra

5. Listing of third countries, territories and zones

- **Commission Implementing Regulation (EU) 2021/404** of 24 March 2021 laying down the lists of third countries, territories or zones thereof from which the entry into the Union of animals, germinal products and products of animal origin is permitted in accordance with Regulation (EU) 2016/429 of the European Parliament and the Council (OJ L 114, 31.3.2021, p. 1)

ANNEX IV

EQUINE ANIMALS

PART 1

List of third countries, territories or zones thereof authorised for the entry into the Union of consignments of equine animals as referred to in point (1)(c) of Article 3

ISO code and name of the third country or territory	Zone as set out in Part 2 of Annex II	Sanitary group	Categories permitted to enter the Union	Animal health certificates	Specific conditions as set out in Part 3	Animal health guarantees as set out in Part 4	Closing date	Opening date
1	2	3	4	5	6	7	8	9

5. Model certificates for entry into the Union of equine animals

- **Commission Implementing Regulation (EU) 2021/403**

ANNEX II

Annex II contains the following model animal health certificates and animal health/official certificates and declarations for entry into the Union and transit through the Union:

Equine animals	
EQUI-X	Chapter 12: Model animal health/official certificate and model declaration for entry into the Union of equine animals not intended for slaughter
EQUI-Y	Chapter 13: Model animal health/official certificate and model declaration for entry into the Union of equine animals intended for slaughter
EQUI-TRANSIT-X	Chapter 14: Model animal health certificate and model declaration for transit through the Union of equine animals not intended for slaughter
EQUI-TRANSIT-Y	Chapter 15: Model animal health certificate and model declaration for transit through the Union of equine animals intended for slaughter

EQUI-RE-ENTRY-30	Chapter 16: Model animal health certificate and model declaration for the re-entry into the Union of registered horses for racing, competition and cultural events after temporary export for a period of not more than 30 days
EQUI-RE-ENTRY-90-COMP	Chapter 17: Model animal health certificate and model declaration for the re-entry into the Union of registered horses for competition after temporary export for a period of not more than 90 days to participate in equestrian events organised under the auspices of the Fédération Equestre Internationale (FEI)
EQUI- RE-ENTRY-90-RACE	Chapter 18: Model animal health certificate and model declaration for the re-entry into the Union of registered horses for racing after temporary export for a period of not more than 90 days to participate in specific race events in Australia, Canada, the United States of America, Hong Kong, Japan, Singapore, the United Arab Emirates or Qatar

MODEL 'EQUI-X'

- II.2.5. The equine animal described in Part I comes from an establishment situated in a country, territory or zone thereof in which
- ⁽¹⁾*either* [surra has not been reported during the 24 month period prior to the date of departure.]
 - ⁽¹⁾*or* [a surveillance and eradication programme for surra recognised by the European Union⁽²⁾ has been carried out during the 24 month period prior to the date of departure of the animal, and
 - ⁽¹⁾*either* [surra has not been reported in the establishment during the 24 month period prior to the date of departure of the animal.]]
 - ⁽¹⁾*or* [surra has been reported in the establishment during the 24 month period prior to the date of departure of the animal, and following the last outbreak the establishment has remained under movement restrictions
 - ⁽¹⁾*either* [until the remaining animals in the establishment have been subjected to an enzyme-linked immunosorbent assay (ELISA) for trypanosomosis or card agglutination test for trypanosomosis (CATT) at a serum dilution of 1 in 4⁽⁴⁾ carried out, with negative results, on samples taken at least 6 months after the last infected animal has been removed from the establishment.]]]
 - ⁽¹⁾*or* [for at least 30 days from the date of cleaning and disinfection of the establishment, after the last animal of listed species on the establishment was either killed and destroyed or slaughtered.]]]

- II.2.6. The equine animal described in Part I comes from an establishment situated in a country, territory or zone thereof in which
- ⁽¹⁾*either* [dourine has not been reported during the 24 month period prior to the date of departure of the animal.]
 - ⁽¹⁾*or* [a surveillance and eradication programme for dourine recognised by the European Union⁽²⁾ has been carried out during the 24 month period prior to the date of departure of the animal, and
 - ⁽¹⁾*either* [dourine has not been reported in the establishment during the 24 month period prior to the date of departure of the animal.]]
 - ⁽¹⁾*or* [dourine has been reported in the establishment during the 24 month period prior to the date of departure of the animal, and following the last outbreak, the establishment has remained under movement restrictions
 - ⁽¹⁾*either* [until the remaining equine animals in the establishment, except castrated male equine animals, have been subjected to a complement fixation test for dourine, carried out with negative results at a serum dilution of 1 in 5⁽⁴⁾ on samples taken at least 6 months after the infected animals have been killed and destroyed or slaughtered, or the infected entire male equine animals have been castrated.]]]
 - ⁽¹⁾*or* [for at least 30 days from the date of cleaning and disinfection of the establishment, after the last animal of listed species on the establishment was either killed and destroyed or slaughtered.]]]

⁽⁴⁾ Tests for glanders, surra, dourine, equine infectious anaemia and Venezuelan equine encephalomyelitis described by the European Union Reference Laboratory for Equine Diseases other than African horse sickness: <https://sitesv2.anses.fr/en/minisite/equine-diseases/sop>

Thank you



© European Union 2020

Unless otherwise noted the reuse of this presentation is authorised under the [CC BY 4.0](https://creativecommons.org/licenses/by/4.0/) license. For any use or reproduction of elements that are not owned by the EU, permission may need to be sought directly from the respective right holders.

Slide ²¹ xx: **element concerned**, source: [e.g. Fotolia.com](https://www.fotolia.com/); Slide xx: **element concerned**, source: [e.g. iStock.com](https://www.istock.com/)

