

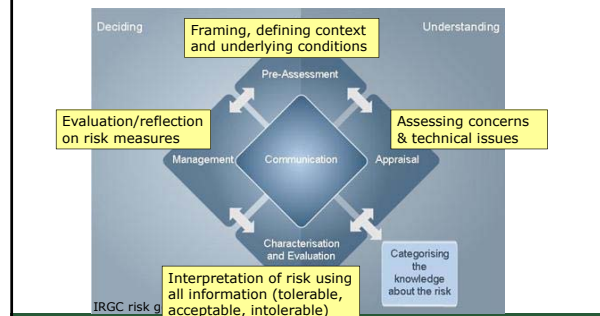
National Institute for Public Health and the Environment  
Ministry of Health, Welfare and Sport



## Opening the social sciences participation tool box to stimulate risk governance practices

Evelyn Heugens, Sander Clahsen, Jeroen Devilee, Ashwin Ramadhin, Antonia Verweij

## Stakeholder engagement in risk governance



IRGC risk g

Opening the social sciences participation tool box to stimulate risk governance practices | June 15th, 2015

## Risk governance from theory to practice: How effective are we?

**Research objectives**

1. Insight into stakeholder engagement (SE) methods used at the RIVM
2. Develop a self-assessment tool for SE methods

Best practices in toolbox



Opening the social sciences participation tool box to stimulate risk governance practices | June 15th, 2015

## National Institute for Public Health and the Environment - RIVM

Governmental organization, 1,500 staff  
Mission: promote public health, consumer safety, protect quality of environment

Three pillars

1. Infectious disease control
2. Environment & safety
3. Public health & health services

Policy, research, regulatory authorities, general public

Ministries, government inspectorates, EU, UN



Opening the social sciences participation tool box to stimulate risk governance practices | June 15th, 2015

## A new strategy for the RIVM: RIVM 2020 Road-map

- From 'ivory tower' to 'with and for society'
  - Social sciences embedded in RIVM
  - Stakeholder engagement
    - > Dialogues
    - > Collaboration with stakeholders (PPP)
  - RIVM knowledge applicable to society as a whole
- Cultural change
  - Small group of front-runners
  - Information and experiences to broad group of RIVM staff



Opening the social sciences participation tool box to stimulate risk governance practices | June 15th, 2015

## Study outline

**Broad inventory SE methods**

- consultation front-runners
- snowball sampling

**Demarcation of SE methods**


- categorization of SE types

**Self-assessment**

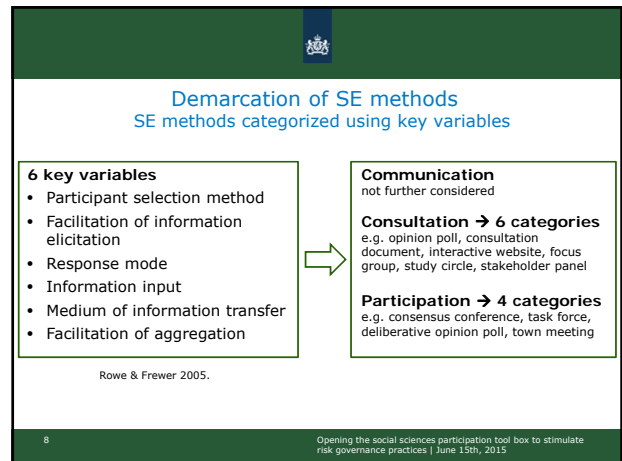
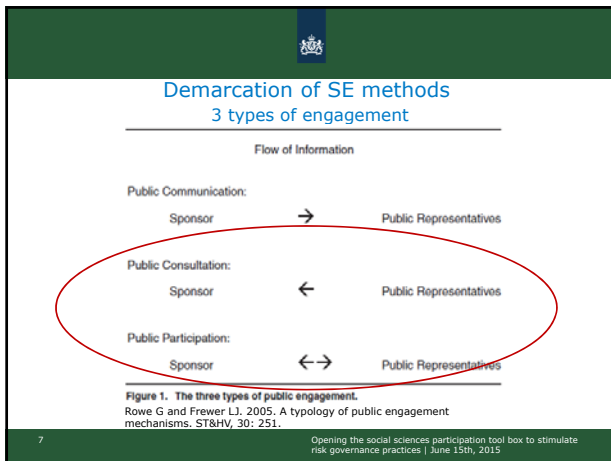
- semi-structured interviews
- quality indicators

**Validation**

- focus group/workshop
- social sciences participation toolbox



Opening the social sciences participation tool box to stimulate risk governance practices | June 15th, 2015



- ### Self-assessment of effectiveness
- Semi-structured interviews** based on quality indicators of Reed (2008)
- Influence of inequalities (education, gender)
  - Opportunity to influence research
  - Representativeness of stakeholders
  - Clear objectives
  - Method selection
  - Highly skilled facilitation
  - Integration of all types of information (e.g. scientific and local knowledge)
  - Embedded in procedures or ad hoc exercise
- Reed MS. 2008. Stakeholder participation for environmental management: a literature review. Biol Cons, 141 (10): 2417.
- Validation**  
Best practices -> focus group/workshop
- 9 Opening the social sciences participation tool box to stimulate risk governance practices | June 15th, 2015

- ### Preliminary results of inventory phase
- Project duration May – September 2015
  - 12 consultation projects:
    - Consultation document open response on issues, sent to potentially interested stakeholders
    - Electronic consultation uncontrolled selection stakeholders
    - Focus group controlled selection stakeholders, face-to-face, facilitated, emphasize on quality of information
  - 16 participation projects:
    - Consensus conference controlled selection of stakeholders, face-to-face, experts provide info
    - Task force participants with ready access to relevant info
- 10 Opening the social sciences participation tool box to stimulate risk governance practices | June 15th, 2015

- ### Lessons learned so far
- Lack of familiarity with SE methods
  - SE activities are not easily identified / not always clearly visible
  - Who is a stakeholder? Different opinions about defining expert and layman:
    - "Only people from knowledge institutes who are knowledgeable about a specific subject are experts".
    - "When developing a product for a target group, representatives of this group (e.g. youth) are the experts".
- 11 Opening the social sciences participation tool box to stimulate risk governance practices | June 15th, 2015





Thank you for your attention  
More info:  
[evelyn.heugens@rivm.nl](mailto:evelyn.heugens@rivm.nl)

13

Opening the social sciences participation tool box to stimulate risk governance practices | June 15th, 2015