

ANSES



✓ An **independent public Agency**
accountable to 5 ministries



✓ **ANSES** contributes to ensuring:
human health and safety
animal health and welfare
plant health and protection



✓ **Reference laboratories**

- Conducting reference and research activities
- Contributing to surveillance and expertise



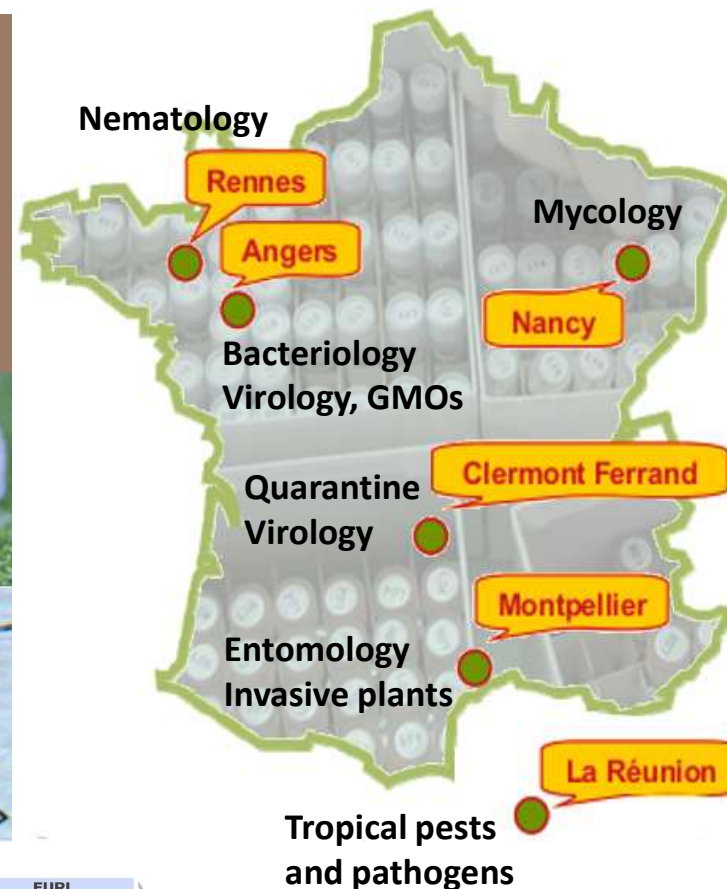
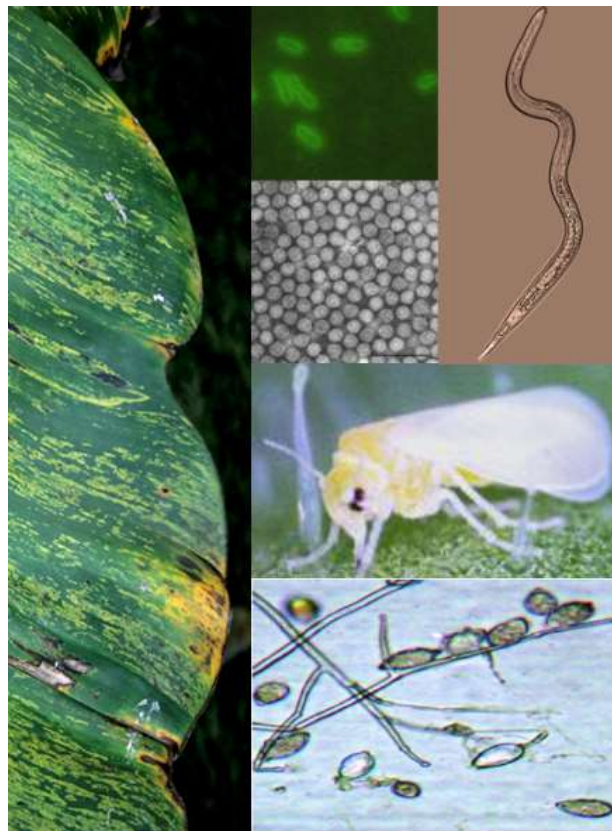
For more information www.anses.fr

EURL
European Union
Reference
Laboratory for
INSECTS AND MITES

ANSES Plant Health Laboratory

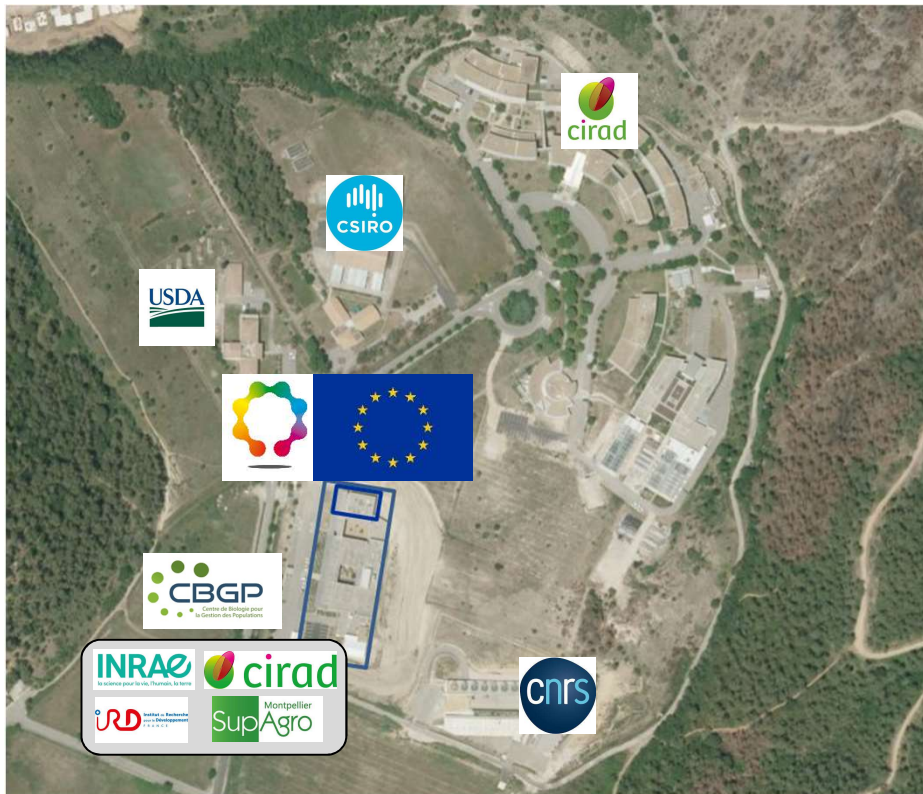
8 fields of competence

6 geographical units in metropolitan France and overseas



Where are we?

- In the South of France (Montpellier)
- Within an international scientific campus
- Hosted by a joint research unit, CBGP = Centre for Biology and Management of Populations



Our field of activity

Analyses in entomology

2000-3000 analyses per year

Several hundred different taxa of arthropods every year

80% for NPPO (Importations / Exportations / Official surveys)

20% customers other than NPPO

Development of identification methods and diagnostic protocols



Provision of expertise for NPPO, Pest Risk Analysis

Scientific cooperation at national and international level

Research activities



The Anses Team



Philippe Reynaud



- Head of EURL Laboratory
- Thysanoptera
- Acari
- General entomology



Jean-Marie Ramel



- Lepidoptera
- Hymenoptera



Raphaëlle Mouttet



- Deputy Head of EURL Laboratory
- Quality Assurance Manager
- Coleoptera
- DNA barcoding



Andrea Taddei



- Lepidoptera
- Diptera
- DNA barcoding
- EPPO Panel of entomology



Valerie Balmes



- Diptera
- Aphididae
- General entomology



Arturo Goldarazena



- Coleoptera
- Thysanoptera



David Ouvrard



- Homoptera
- Coccoidea
- EPPO Panel of entomology

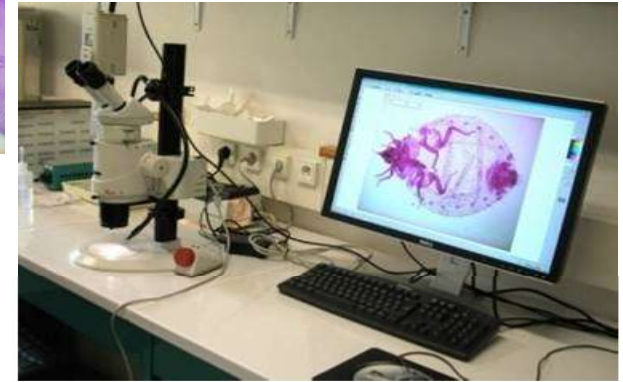
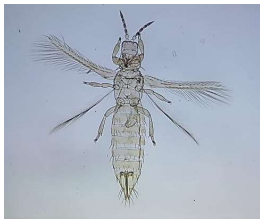


Sylvie Dubois



- Administrative support

Equipment for morphological identification

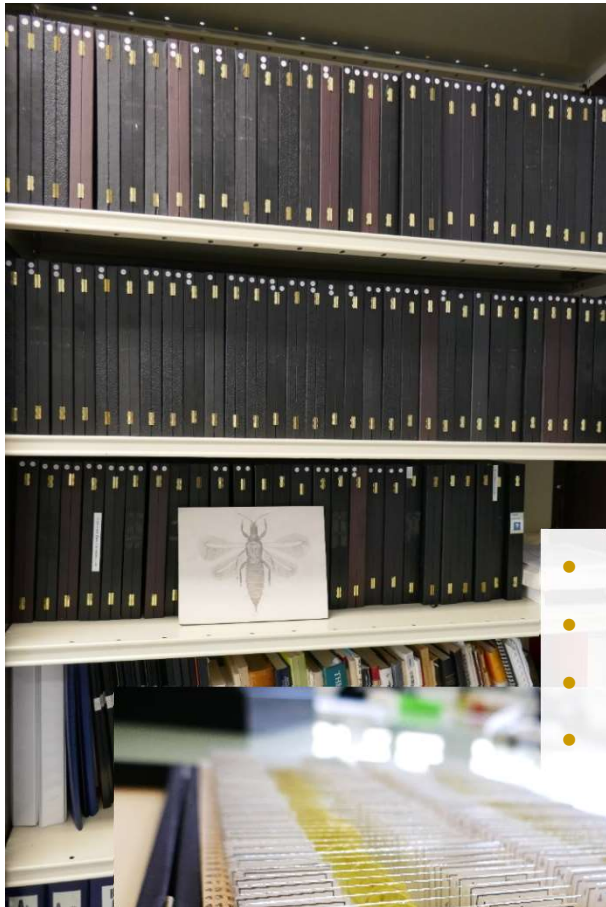


Slides and tubes collections

Main taxonomic groups covered:

- ✓ Thysanoptera
- ✓ Hemiptera Sternorrhyncha
- ✓ Diptera
- ✓ Lepidoptera
- ✓ Coleoptera
- ✓ Acari

- 30 000 tubes (300 000 specimens)
- 15 000 slides
- More than 400 families
- More than 4000 species



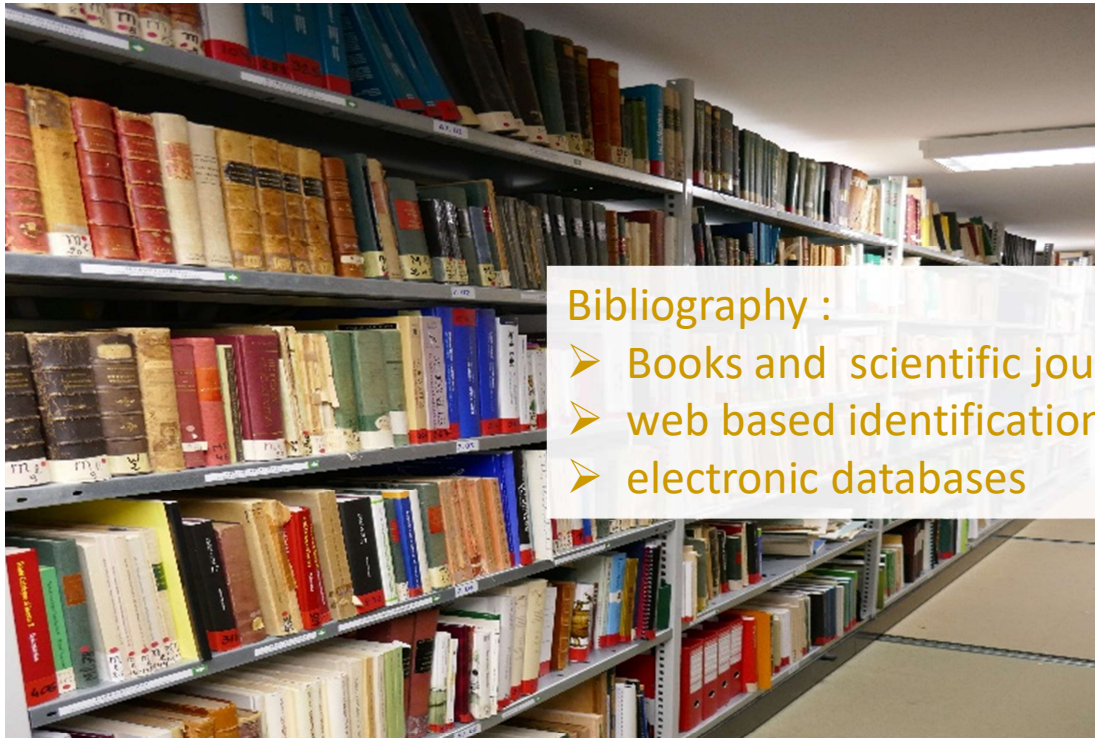
Vouchers collection CBGP



1 000 000 specimens
60 000 species of insects
700 species of mites

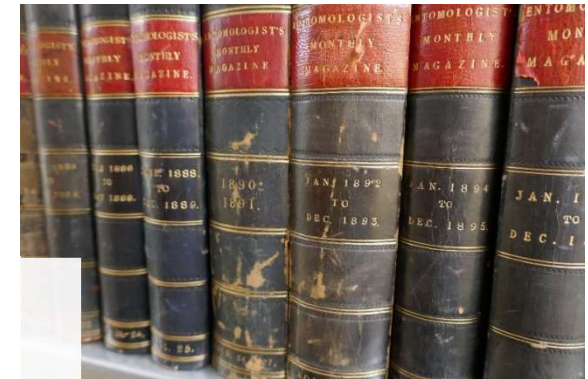


Specialized library on taxonomy

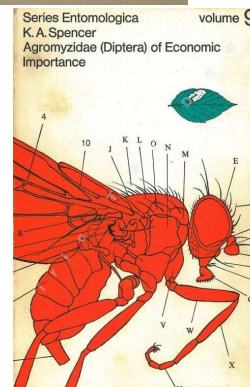
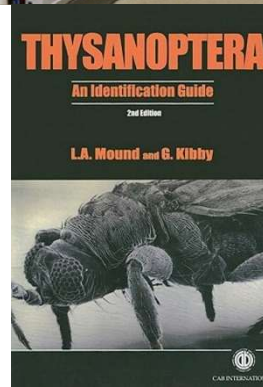
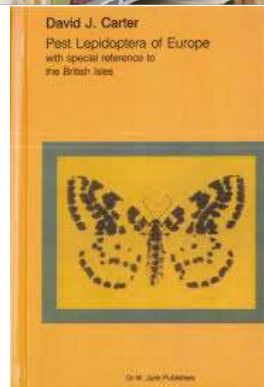
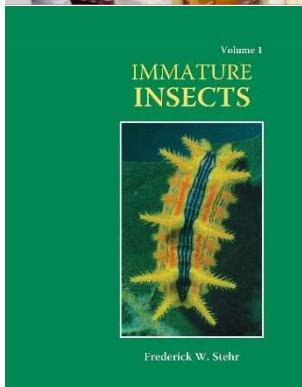


Bibliography :

- Books and scientific journals
- web based identification keys/tools
- electronic databases



Zoological
Record®



ELSEVIER
Scopus

EURL
European Union
Reference
Laboratory for
INSECTS AND MITES

Accreditation issues



NF EN ISO 9001
Quality
Management

NF EN ISO/CEI 17025
Tests

NF EN ISO/CEI 17043
Proficiency testing

ISO 17025

- The **Entomology unit** is accredited since 2012
- A quality management system applied to all morphological analyses
- Accreditation scope : **morphological identification of *Bemisia tabaci*** according to the method ANSES/LSV/MA007

ISO 17043

- The **Plant Health Laboratory proficiency testing service** organizes all PTs
- Organization based on a **shared quality management system compliant with the ISO 17043**

